

DESCRIPTION

The P4360 Microscan MS-2 Barcode Scanner is a component of the DoseControl Dosimetry System. The MS-2 is designed to be mounted, connected, and used within the Thermo Evolution 220 Spectrophotometer, and utilized by the DoseControl software to record the unique barcode ID of DoseStix dosimeters.

APPLICATION

For use in conjunction with the Evolution 220 Spectrophotometer to capture the barcode ID of DoseStix dosimeters.

SPECIFICATIONS

Physical Specifications:

Product Dimensions:	Packaging Dimensions:	Product Weight:
44.5mm (L) x 44.5mm (W) x 21.6mm (H)	12.7cm x 12.7cm x 7.62 cm / 5.0" x 5.0" x 3.0"	0.68 kg / 1.5 lbs.

Material:	Plastic
Color:	Black
Packaging:	Cardboard Box

Calibration:

None required.

Maintenance:

- The barcode scanner should be cleaned as part of a preventative maintenance program at a frequency dependent on the level of cleanliness of the area.
- Any accumulated particulate can be removed using compressed air, and any smudges on the lens may be removed by wiping with a soft cloth.
- Avoid dropping or physically damaging the scanner. If damage occurs, verify performance and consult GEX Customer Service.

Storage:

Store the device in a cool and dry area.

PRODUCT PHOTO



USAGE

1) Installation

- a. The product includes the scanner with integrated USB cable and the screws and mount to secure it to the P4330. When ordered with the P4330, it is typically attached and tested at GEX prior to shipment.
- b. Secure the scanner to the mount using the hex-head screws and 2.5mm driver tool (included). See Figure 1.
- c. Secure the mount assembly to the P4330 GEX Dosimeter Holder System baseplate using the provided hex-head screws and 7/64" driver tool (included). See Figure 2.



FIGURE 1: MS-2 Barcode Scanner Assembly



FIGURE 2: Secured Mount Assembly

- d. Insert the baseplate assembly into the sample compartment of the Evolution 220 using the registration pins at the back, and then push down to secure the plate against the front slip-pin. See Figure 3.
- e. Ensure that the spring-loaded beam tubes fit flush against the walls. See Figure 4.

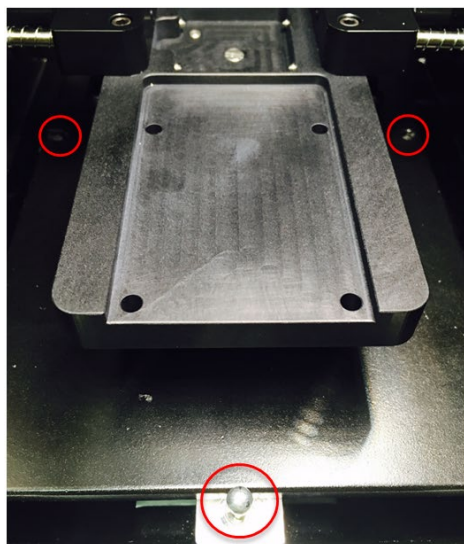


FIGURE 3: Registration pins and front slip-pin

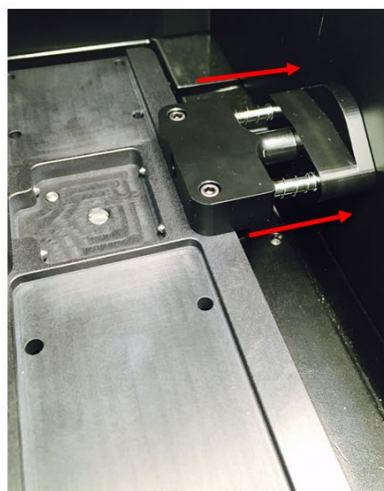


FIGURE 4: Spring-loaded beam tubes

- f. Carefully route the USB cord out the front of the sample compartment, through the flexible foam opening, and route the cord to connect to the back of the PC. A USB extension cable may be required. See Figure 5 below.



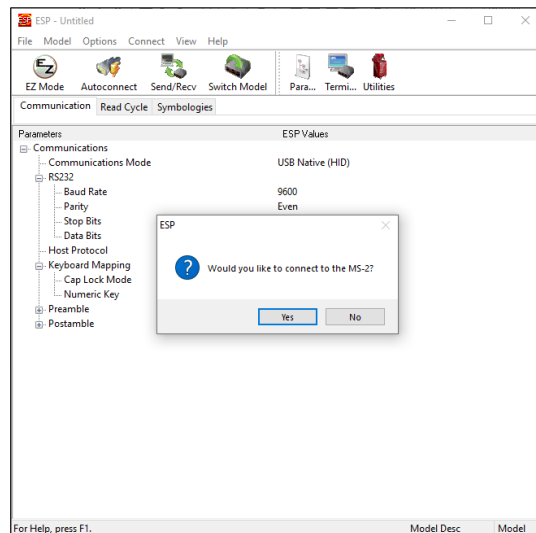
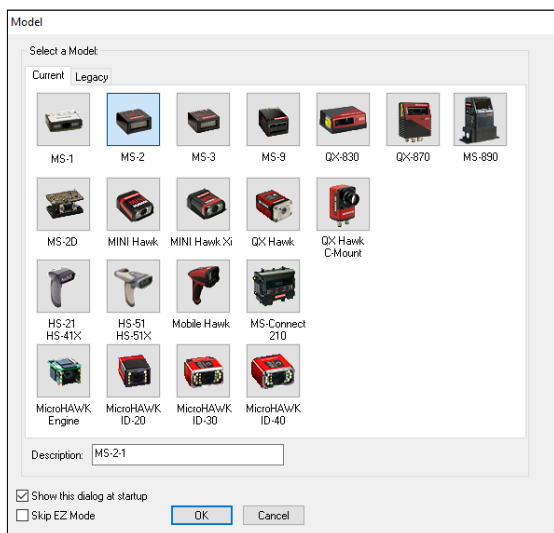
FIGURE 5: USB routing

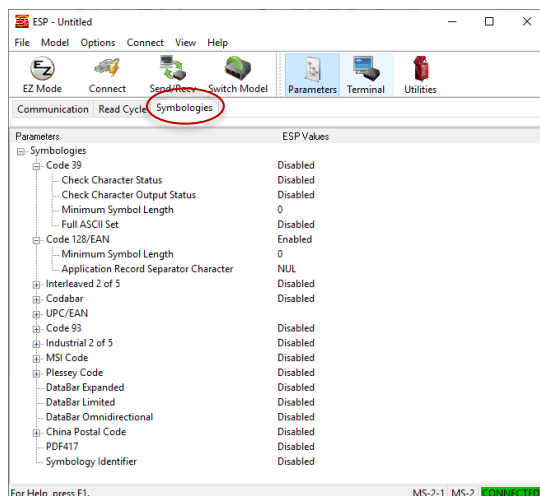
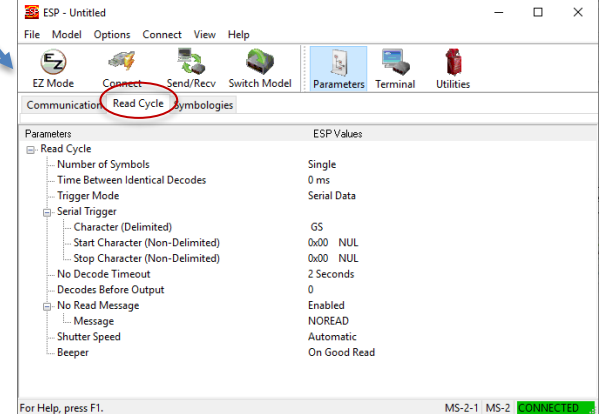
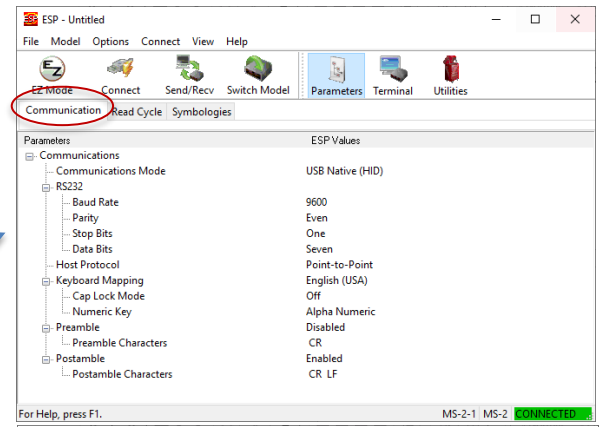
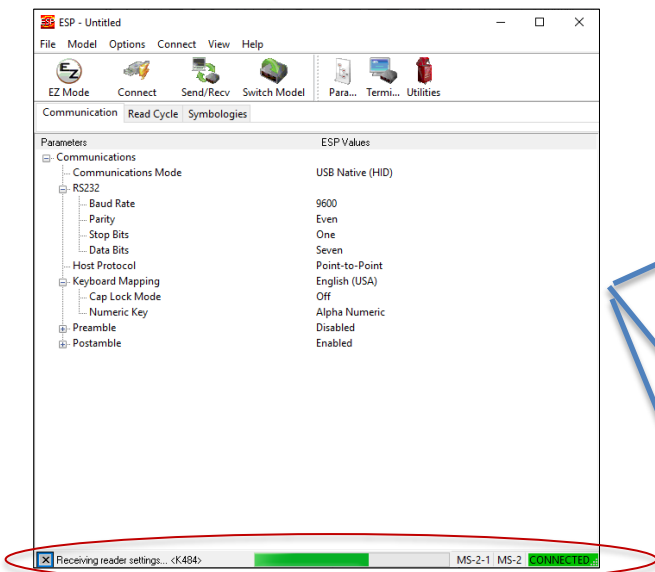
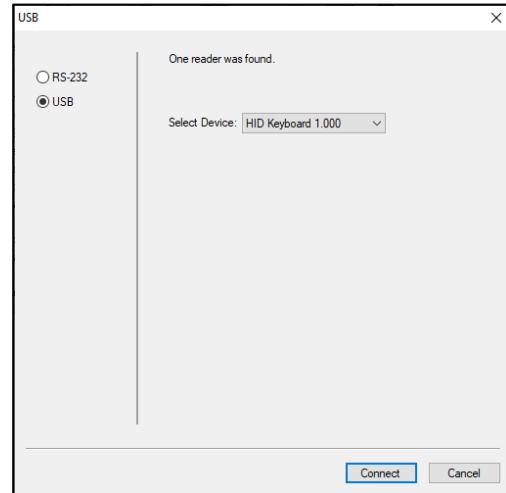
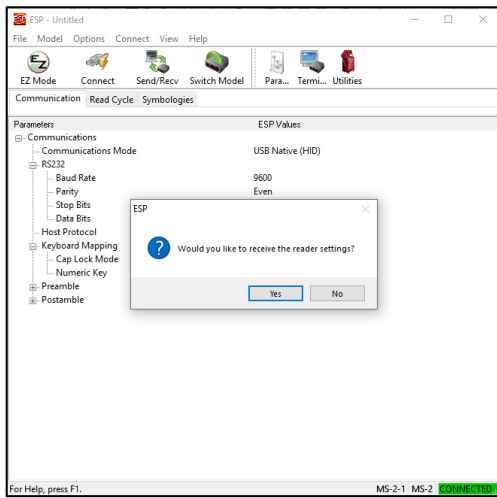
2) Configuration

The scanner comes pre-configured as supplied by GEX. Below are the steps to check that the configuration matches GEX specifications. If your configuration does not match, change the item to match.

- Download and install the latest version of Microscan ESP software: <https://www.microscan.com/en-us/products/barcode-software-and-connectivity/esp-easy-setup-program-software>.
- Connect the MS-2 scanner to a USB port on a PC with the integrated USB-A cable.
- Open the ESP software and execute the following:
 - Check the box at the bottom left "Skip EZ Mode" and select the MS-2 from the available options and press "OK".
 - A message is displayed "Would you like to connect to the MS-2?". Press "OK".
 - A screen opens – select the "USB" radio button and press "Connect".
 - A new message is displays "Would you like to receiver the reader settings?" – press "Yes".
 - The status bar at the bottom of the screen displays the progress of the receiving of data. Let it complete.
 - Verify the settings on the Communication, Read Cycle, and Symbologies tabs and change any settings that don't match the configuration shown in the images below.

See the images below for reference with steps i - vi above.





3) Qualification

See GEX Doc# 100-274, *Integrated Barcode Scanner Qualification (IQ/OQ)*.

WARRANTY / GUARANTEE

Warranty:

1 year manufacturer warranty: <https://www.microscan.com/en-us/support/product-warranty>

Guarantee:

1 year satisfaction guarantee. Undamaged product may be returned within one year from the date of delivery for any customer dissatisfaction.

RELATED DOCUMENTS

- GEX Doc#100-156, P4330 Evolution 220 Spectrophotometer
- GEX Doc #100-159, Evolution 220 Dosimeter Holder System – Product Specification and Usage (PSU)
- GEX Doc# 100-274, Integrated Barcode Scanner Qualification (IQ/OQ)
- GEX Doc #100-280, IQOQ Plan and Protocol for DoseControl System

REVISION HISTORY

DATE	CHANGE DESCRIPTION	REVISION
01/31/17	Initial release.	A
05/23/19	Removed configuration instructions to increase succinctness – the product is delivered configured. Added related documents. ECO 70444.	B
07/12/19	Added section 2.0 on configuration again (even if GEX ships it configured, if we make a mistake or if the customer changes it inadvertently customers need a reference to know what the correct configuration is). ECO 70463.	C